

QForm UK Direct makes it possible to create a 3D model of the preforming dies for bulk forging processes and import the geometry into QForm UK to verify the result.

The way **QForm UK Direct** operates is simple: final die models need to be imported into the program and set the required parameters.

QForm UK Direct generates the geometry of the preliminary dies based on the isothermal surface method. The designed preliminary dies models can be easily imported into QForm UK to verify the forging process.

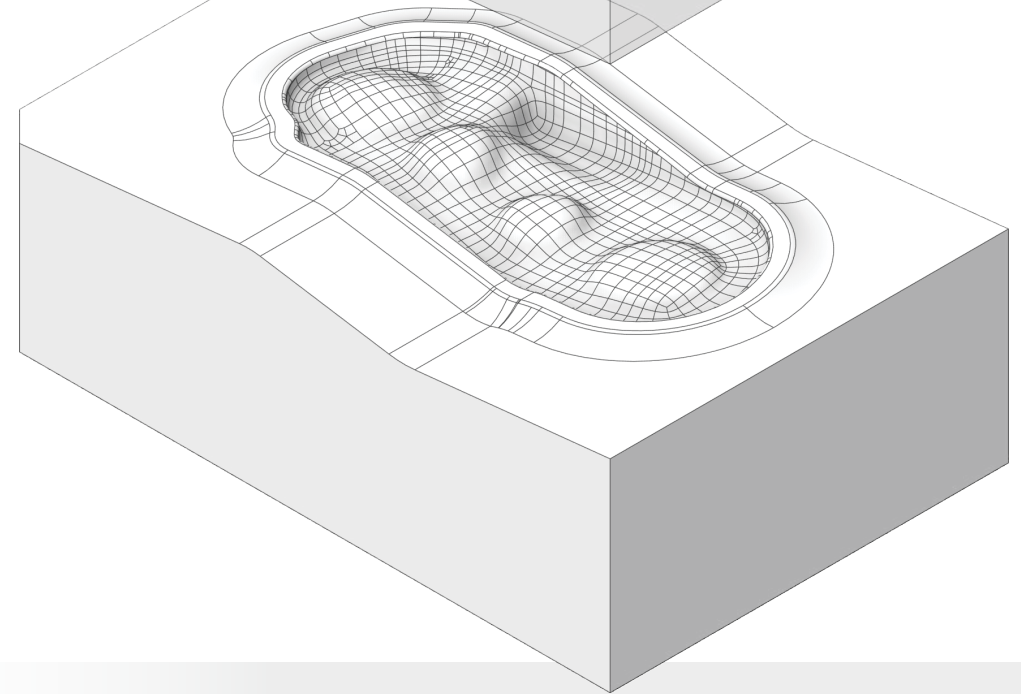
QForm UK Direct contains the full functionality of a CAD program and uses QForm's UK calculation algorithms to generate surfaces.

It is possible to refine die geometry adding fillets, holes and other necessary technological features. The created geometry can be used for both CAE and CAM systems.



www.qform3d.com

QFORM UK DIRECT



SYSTEM FOR AUTOMATED DESIGN OF BULK FORGING PREFORMING DIES

Validated by industry worldwide

Integrated with CAD/CAM

Easy-to-use interface

24/7 online support

High performance

Reduce costs

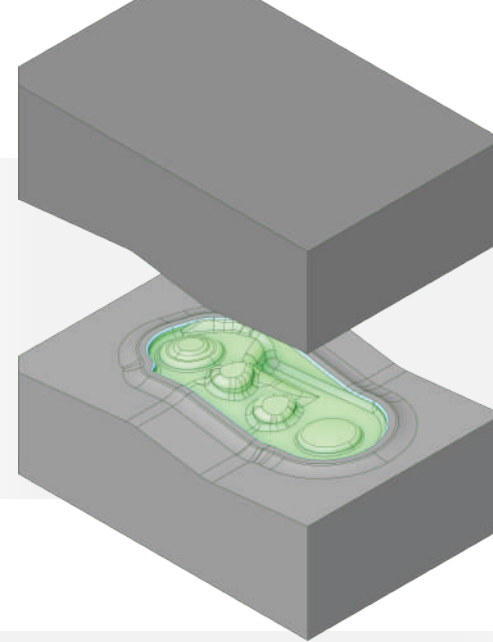
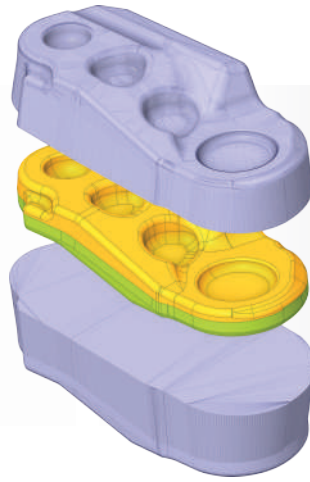
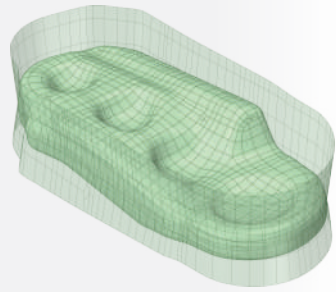
Boost productivity

Increase profitability

Extend your product range

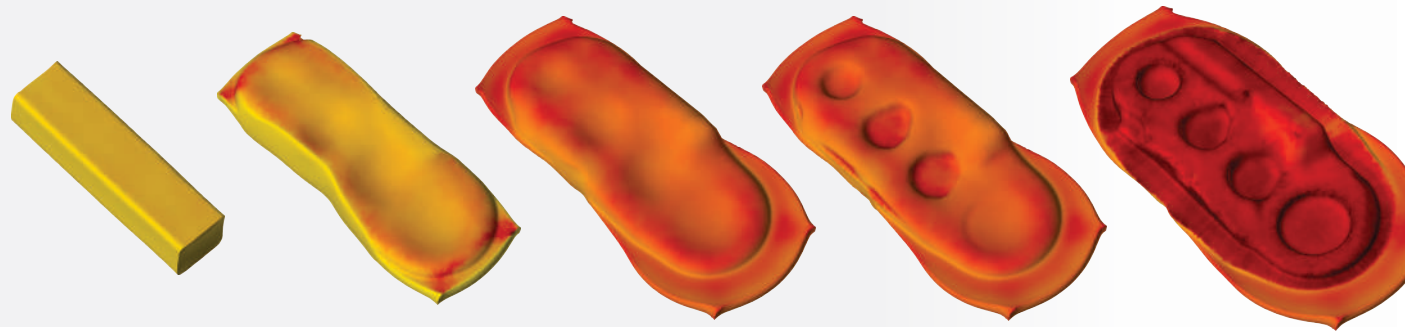
Get more from your equipment

RAPID GENERATION
OF PREFORMING
DIES SURFACES

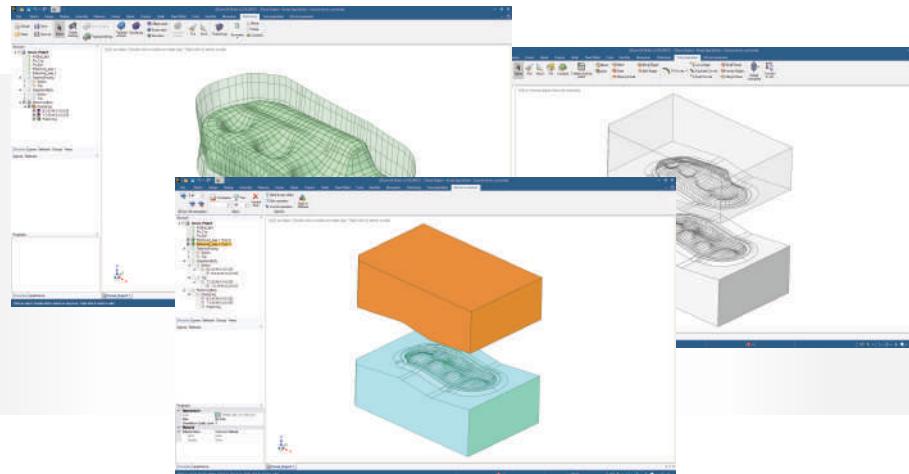


EXPORT OF 3D
DIE MODELS

FAST VERIFICATION IN QFORM UK
OF OBTAINED DEFECT-FREE
TECHNOLOGICAL PROCESS



USER-FRIENDLY CONTROL
OF SMOOTHING AND OFFSET
PARAMETERS OF SURFACES



FULL FUNCTIONALITY
OF THE CAD SYSTEM