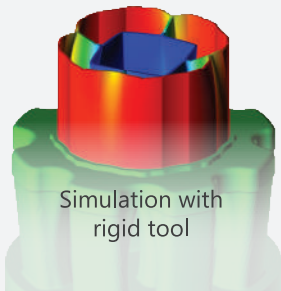
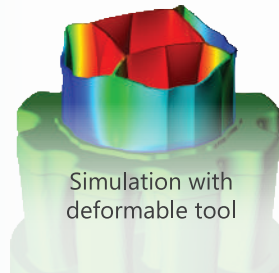


APPLICATION SAMPLES

COUPLED TASK

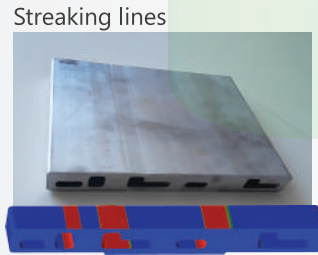


Simulation taking into account die set deformation and temperature evolution

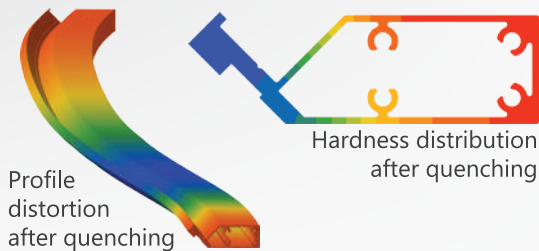
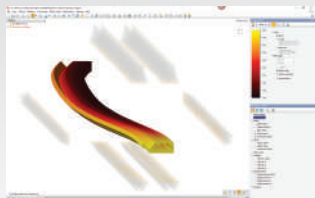


PREDICTION OF DEFECTS

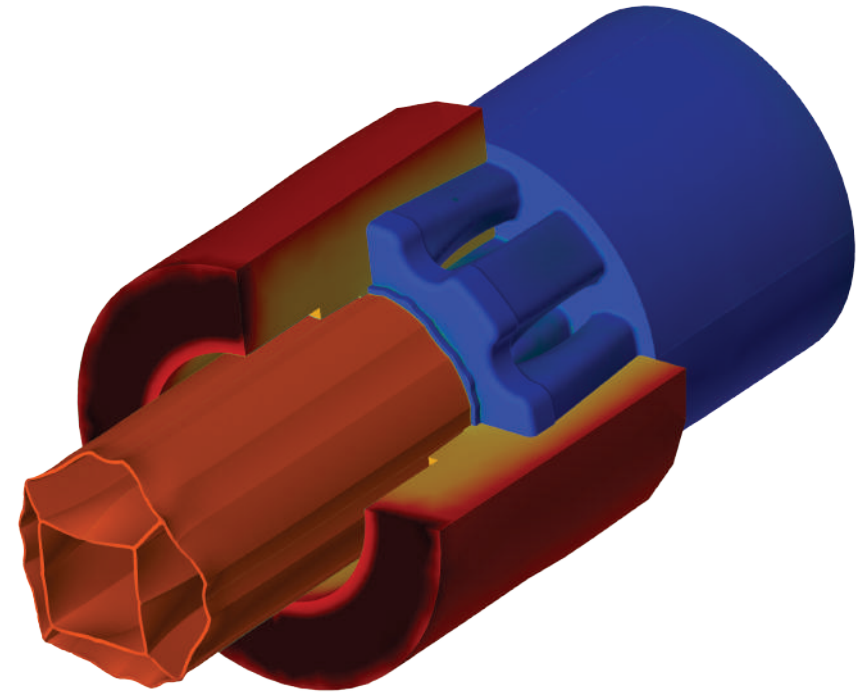
Prediction and elimination of defects at the design stage



NEW: QUENCHING SIMULATION



QFORM UK EXTRUSION



SOFTWARE FOR SIMULATION, ANALYSIS AND OPTIMIZATION OF PROFILE EXTRUSION

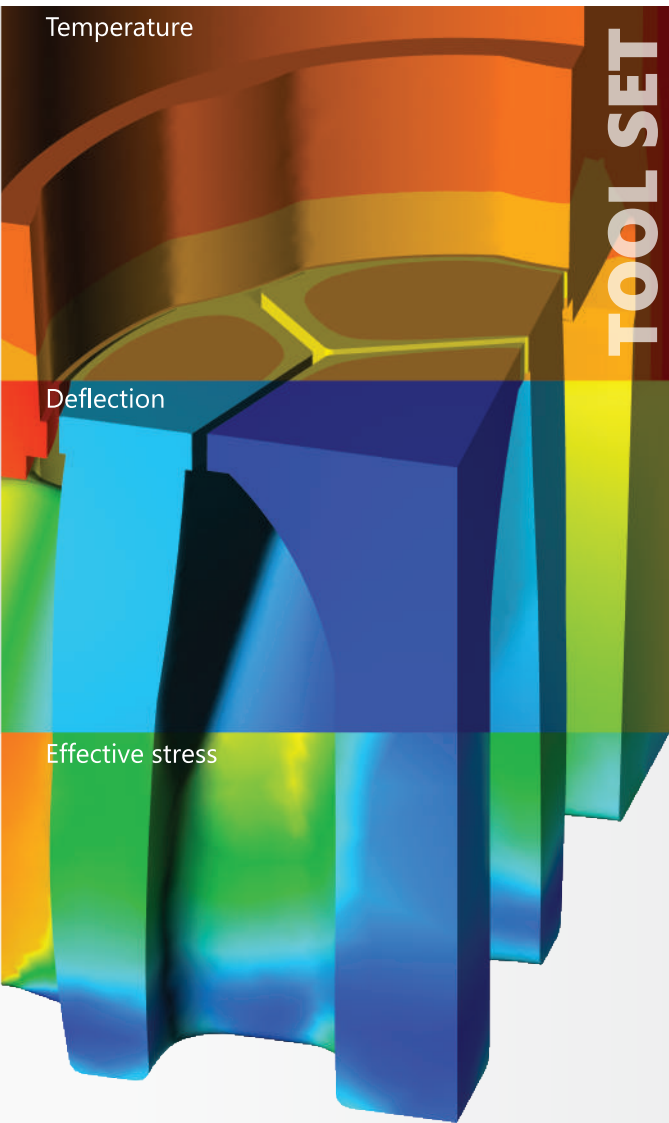
Validated by industry worldwide
Integrated with CAD/CAM
Easy-to-use interface
24/7 online support
High performance

Reduce costs
Boost productivity
Increase profitability
Extend your product range
Get more from your equipment



FOR DIEMAKERS AND DESIGNERS

FOR PROFILE MANUFACTURERS



Calculation of stress-strain state, tool life analysis
Design optimization based on simulation

Fully coupled deformation and temperature task calculation
Prediction of extruded profile shape

Analysis of charge welds for scrap minimization

Productivity increase:

- temperature-velocity mode
- tool life analysis
- material utilization rate

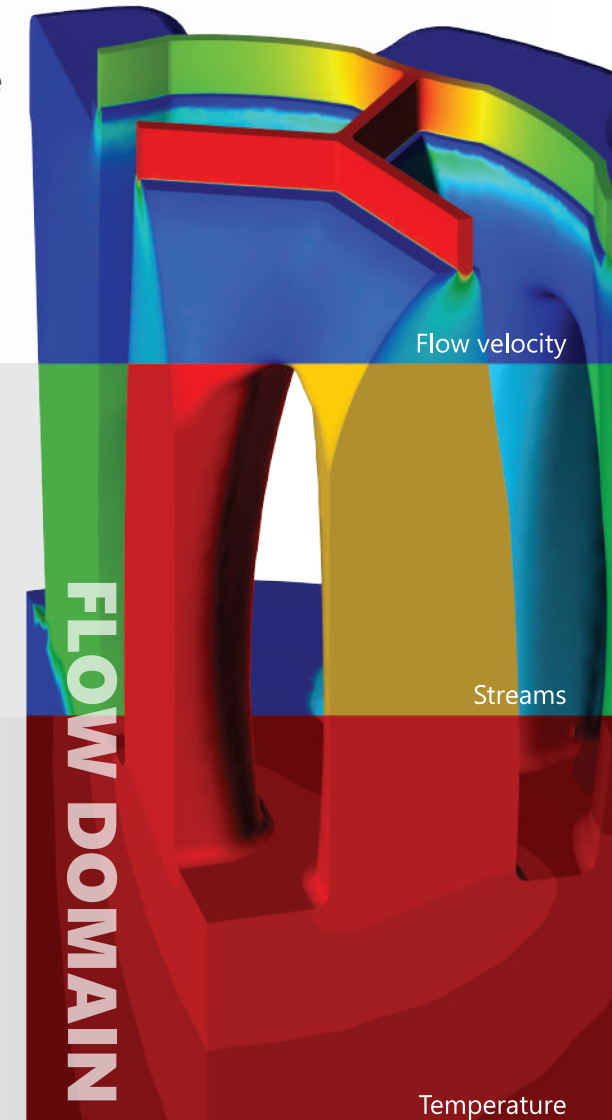
Prediction of final profile dimensions

Profile quality control:

- streaking lines
- welding seams
- back-end defects
- underfilling prediction

Quenching simulation:

- all cooling system configurations
- prediction of profile distortion and mechanical properties depending on cooling modes



VALIDATION OF DIES AND TECHNOLOGY BY QFORM UK
ALLOWS DIEMAKERS AND DESIGNERS TO SUPPLY
PRODUCTS OF THE HIGHEST QUALITY TO EXTRUDERS

QFORM EXTRUSION CALCULATES MATERIAL FLOW
FULLY COUPLED WITH THE TEMPERATURE AND
DEFORMATION OF THE TOOL AND DIE SET ELEMENTS